

St. Francois County
COMMISSION MEETING
Tuesday December 28, 2021

Call to order **10 am**

Roll Call of Commissioners present

Stand **(as desired)** for

Pledge of Allegiance

&

Invocation

Consent agenda

Approval of Minutes for open meeting of Dec. 21, 2021

APPOINTMENT ORDER—Terry Thompson—R&B

APPOINTMENT ORDER—Matthew Brown—Pros Attorney

Monthly report—Public Administrator

Yearly tax write-off for Trustee Deeds—Pam Williams--Collector

No tabled agenda items

This consent agenda is also posted on our website along with our regular agenda.

Approval to purchase Cyber Security Insurance

- County Clerk's office

Final approval for purchase of 4 Sheriff Dept. Cars.

2022 Ford Police Interceptor Utility vehicles @ \$ 34,828.00 each

The State approved supplier would have charged \$ 37,280 each.

Buying from Scism will save \$ 2,452 each for our County taxpayers.

A notice for “intent to buy” was published and the 10 days has expired. We need to place this order **THIS CALENDAR YEAR** in order to receive the cars in March 2022. Otherwise, the delivery will be in August. They only build these cars twice a year.

Next REGULAR meeting—This is an OPEN meeting

Tuesday Jan 4, 2022 10 A.M. **(NEW TERM)**

3rd floor of the Annex building

1 West Liberty Street

Farmington, Missouri 63640

The agenda for the meeting will be posted
and will be on our website after 10 am **Friday Nov. 30th**. (Agenda
items must be in by 10 am on Friday--due to holiday closing.)

Holiday closing January 3rd 2022

(Our County offices are to be open on this Friday.)

This is in compliance with our previously approved “State” holiday list.



Other possible business

- Correspondence
- Public comments
- Departmental Reports

Adjournment

Satellite Building possibility

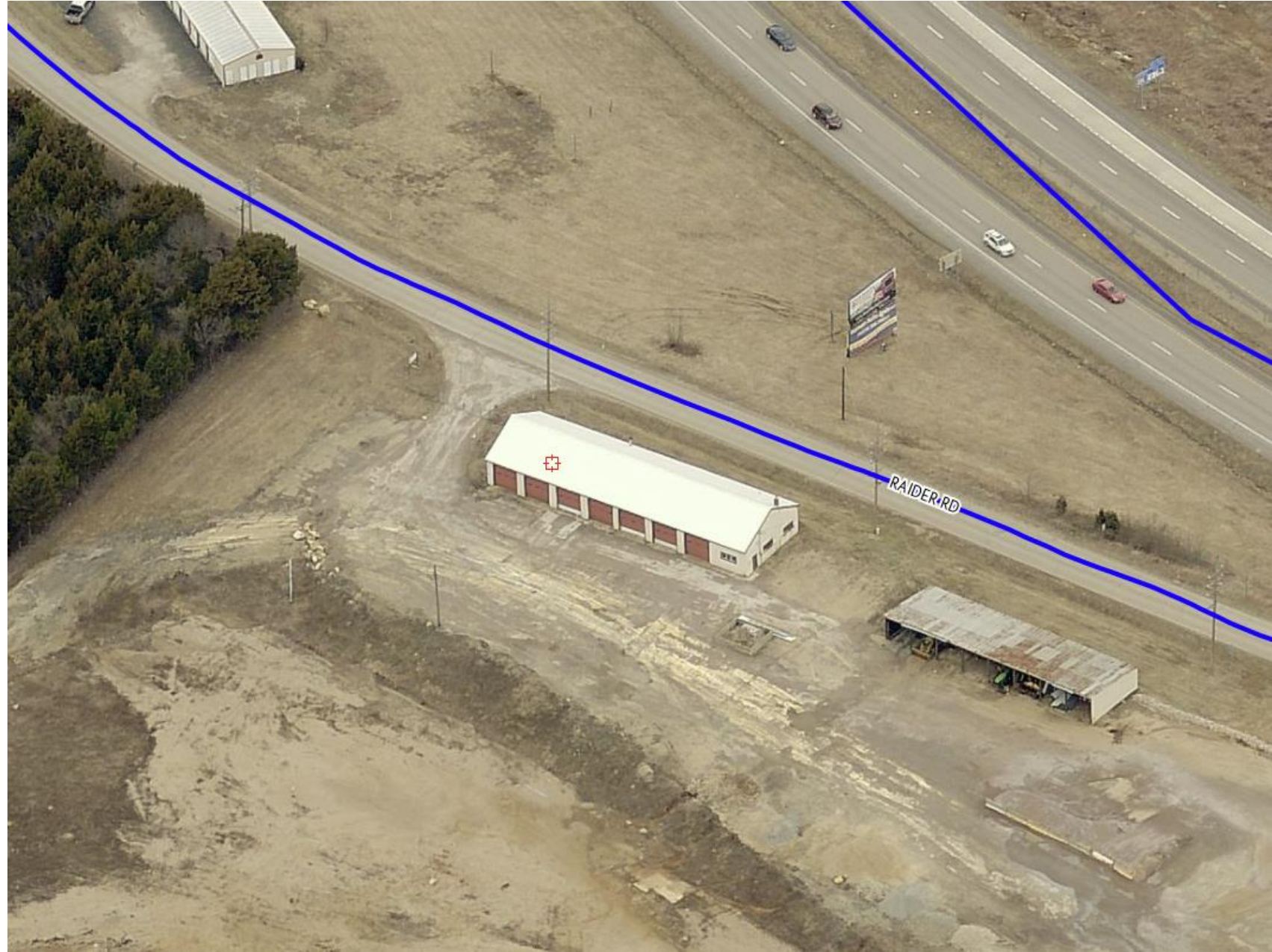
First planned use is for computer servers.

Other ideas for building uses:

Storage of older records that we must keep but are rarely used.

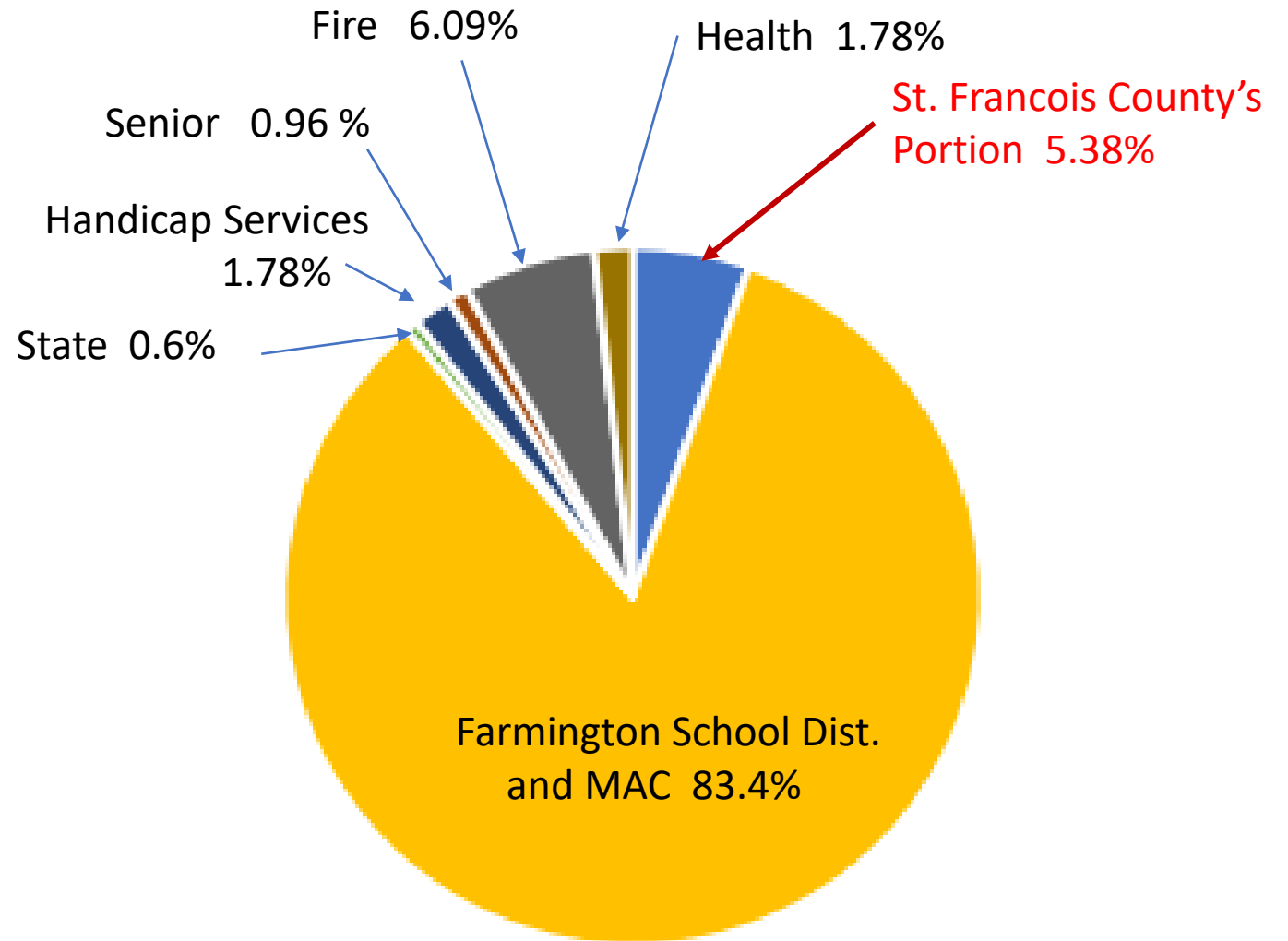
Deputy Sheriff substation with microwave, bathroom and a place to write reports-- without driving to Farmington.

Possible polling place in the future???

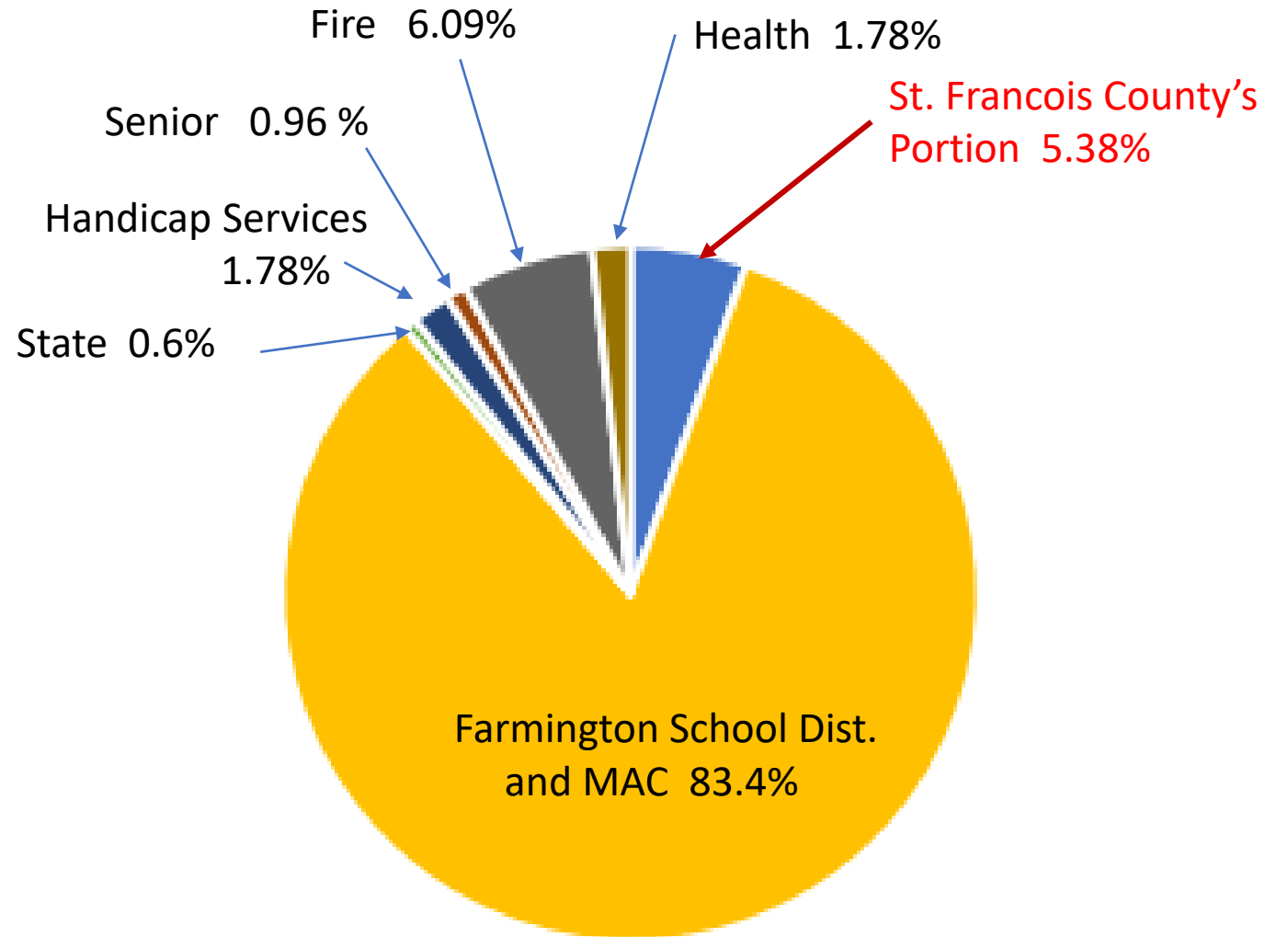


COUNTY (???) tax distribution

General Revenue	0.0236	SFC	
Road	0.2418		0.2654
Farm. School	3.65	Education	
MAC	0.4608		4.1108
State	0.03		0.03
Han Ser	0.0875		0.0875
Senior	0.0473		0.0473
Fire	0.3		0.3
Health	0.0875		0.0875



These numbers are from my personal tax bill. Your tax bill will differ due to the school district and other levies where you live. Look at your own tax bill to find the way your money goes.



These numbers are from my personal tax bill. Your tax bill will differ due to the school district and other levies where you live. Look at your own tax bill to find the way your money goes.

